



"Making Pittsburgh Home"

The Docks

501 Riverfront Drive, Pittsburgh, PA 15238

The Docks is located on the Allegheny River in Fox Chapel. This upscale suburban community is near The Waterworks Mall and Fox Chapel Plaza, providing specialty and grocery stores, along with fine dining and The Waterworks Cinema. Located near PA Route 28, The Docks is situated 8 miles from downtown Pittsburgh and only 5 miles from the Pennsylvania Turnpike.



The Docks is rich with amenities. Relax in the outdoor pool after a long workout in the 24-hour fitness center. Other amenities include nine-foot ceilings, large walk-in closets and either a balcony or a patio. Located only a few minutes from shopping, restaurants and located adjacent to the Fox Chapel Yacht Club. The Docks is a beautiful waterfront community.



Apartment Package

Complete Furniture Package-sofa, love seat, coffee and end tables, dining table, beds, nightstands, and dressers

Complete Housewares Package-microwave, coffee maker, electric can opener, toaster, cookware, dishes, glasses, utensils, flatware...everything needed to cook and serve

Modern Kitchen with Full Size Appliances-refrigerator, range, dishwasher, and garbage disposal

Washer and Dryer in each apartment

Expanded Cable Television with DVD and VCR

Internet Access-high speed broadband connection

Private Phone Line-free local calling and digital answering machine

Utilities-electric, gas and water

Weekly Housekeeping and linen exchange

Pet Policy-weight limit and restrictions-one time \$250 non-refundable pet fee



Rates	Square Feet	3-10 Nights *	11-29 Nights * 7	30 + Nights
		Confirmed Vacate	day vacate notice	14 day vacate notice
1 bedroom	894	\$167	\$137	\$117
2 bedroom	1193	\$185	\$155	\$135
3 bedroom	1515	\$205	\$175	\$155

* Stays of less than 30 nights are subject to 14% tax, rate does not include tax.

Corporate Accommodations, Inc.

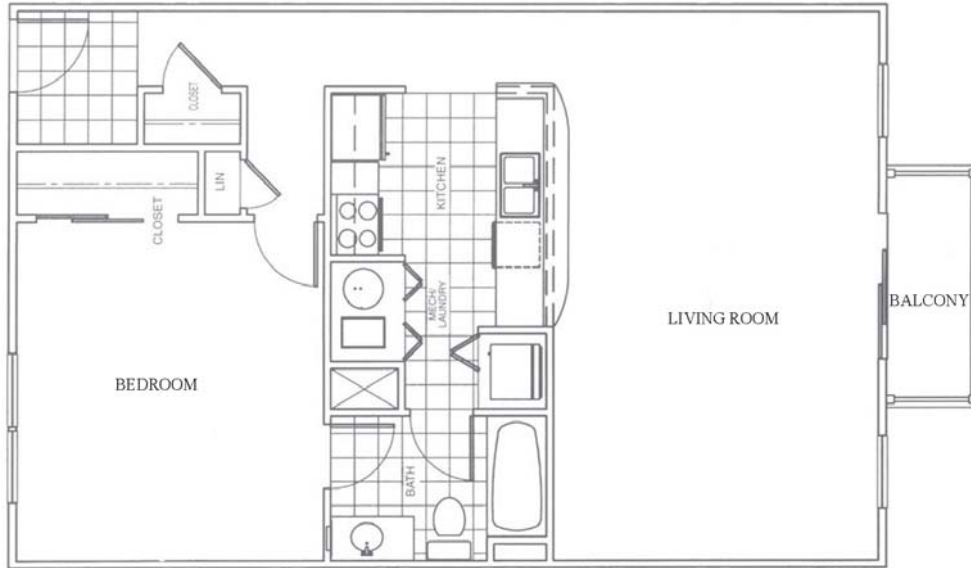
"Making Pittsburgh Home"

1.800.899.5456

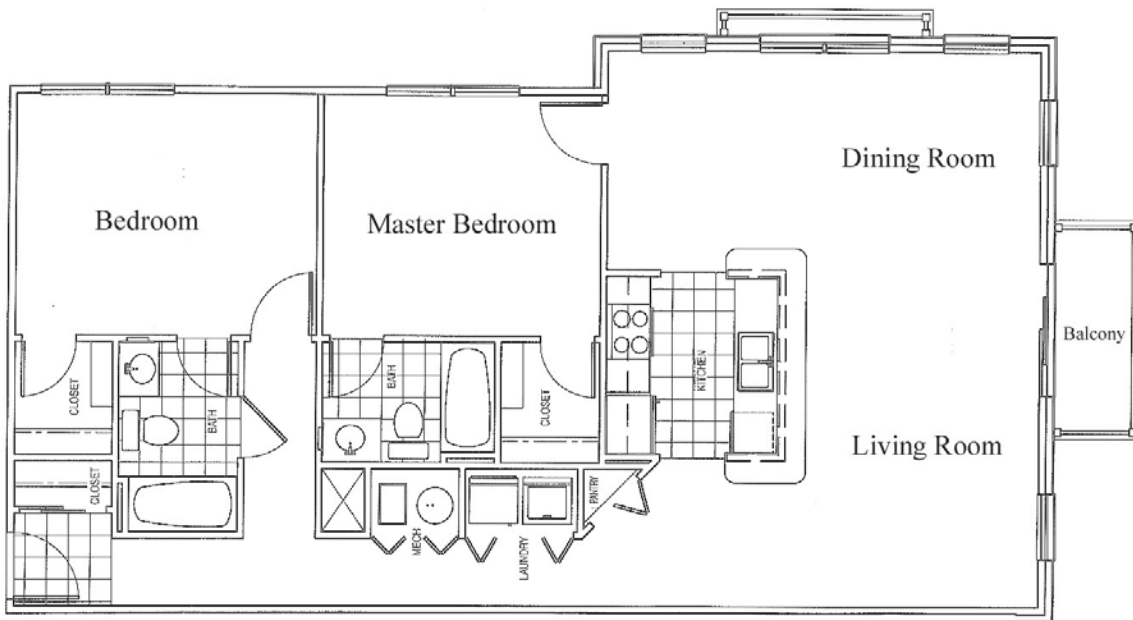
www.corpaccom.com

Floor Plans

One Bedroom-894 Sq. Ft.



Two Bedroom-1193 Sq. Ft.



Directions

From Pittsburgh: Follow I-279 North to the PA Route 28 exit. Follow PA Route 28 approximately 6 miles to the Fox Chapel Exit (Exit No. 8). On the exit ramp, bear left towards Fox Chapel Road. Make a right at the traffic light onto Fox Chapel Road. At the next light go straight onto Old Freeport Road. Go approximately ½ mile and turn right at the sign for The Docks and Fox Chapel Yacht Club. The community will be on your right.

From Pittsburgh International Airport: Follow I-376E towards Pittsburgh. Upon exiting the Fort Pitt tunnels merge left to I-279 North. Follow I-279 North a short distance to the PA Route 28 exit. Follow PA Route 28 approximately 6 miles to the Fox Chapel Exit (Exit No. 8). On the exit ramp, bear left towards Fox Chapel Road. Make a right at the traffic light onto Fox Chapel Road. At the next light go straight onto Old Freeport Road. Go approximately ½ mile and turn right at the sign for The Docks and Fox Chapel Yacht Club. The community will be on your right.



Corporate Accommodations, Inc. © 2003 Navigation Technologies NAVTECH

"Making Pittsburgh Home"

1.800.899.5456

www.corpaccom.com