



"Making Pittsburgh Home"

Ventana Hills

1350 Ventana Dr., Coraopolis, PA 15108

Ventana Hills is one of the premier apartment communities in the West Hills. Adjacent to PA Route 60 and minutes away from the Pittsburgh International Airport, Ventana Hills offers the utmost in convenience.

The apartments are all equipped with nine-foot ceilings and large, walk-in closets.



Ventana Hills has the amenities to match its superb location. It offers a complete 24 hr. fitness center as well as easy access to a nearby hiking and biking trail. In the summer cool off in the pool or just relax on your patio or balcony.

In addition to all of the other amenities, the clubhouse provides a business center for your convenience.



Apartment Package

Complete Furniture Package-sofa, love seat, coffee and end tables, dining table, beds, nightstands, and dressers

Complete Housewares Package-microwave, coffee maker, electric can opener, toaster, cookware, dishes, glasses, utensils, flatware...everything needed to cook and serve

Modern Kitchen with Full Size Appliances-refrigerator, range, dishwasher, and garbage disposal

Washer and Dryer in each apartment

Expanded Cable Television with DVD and VCR

Internet Access-high speed broadband connection

Private Phone Line-free local calling and digital answering machine

Utilities-electric, gas and water

Weekly Housekeeping and linen exchange

Pet Policy-weight limit and restrictions-one time \$250 non-refundable pet fee



Rates	Square Feet	3-10 Nights *	11-29 Nights * 7	30 + Nights
		Confirmed Vacate	day vacate notice	14 day vacate notice
1 bedroom	776	\$160	\$130	\$110
2 bedroom	1007	\$173	\$143	\$123
3 bedroom	1194	\$194	\$164	\$144

* Stays of less than 30 nights are subject to 14% tax, rate does not include tax.

Corporate Accommodations, Inc.

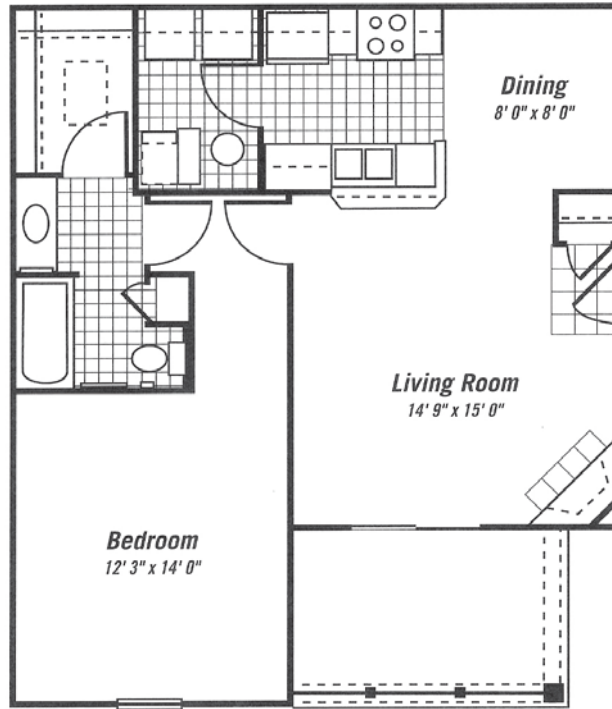
"Making Pittsburgh Home"

1.800.899.5456

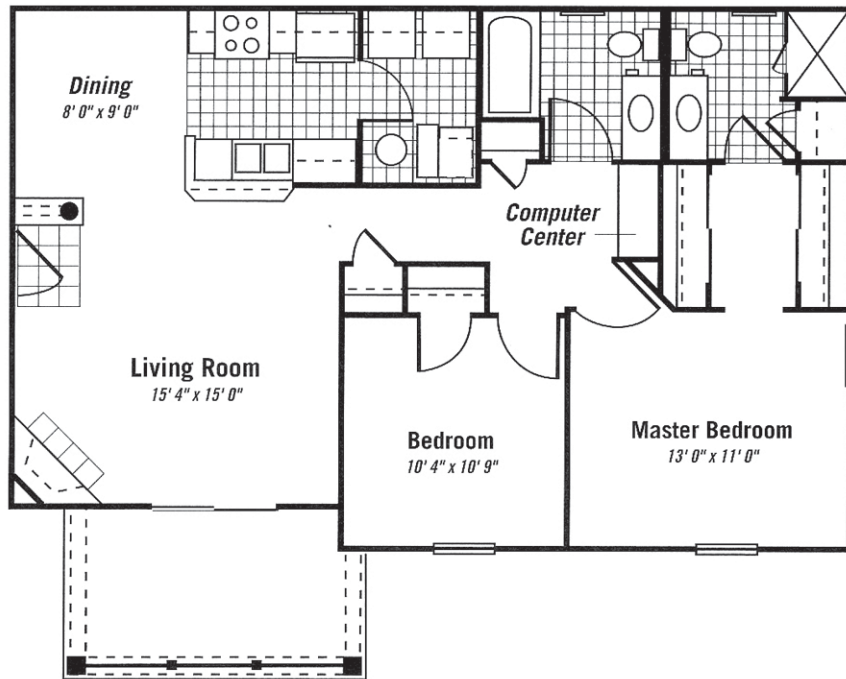
www.corpaccom.com

Floor Plans

One Bedroom-776 Square Feet



Two Bedroom-1007 Square Feet



Property Map

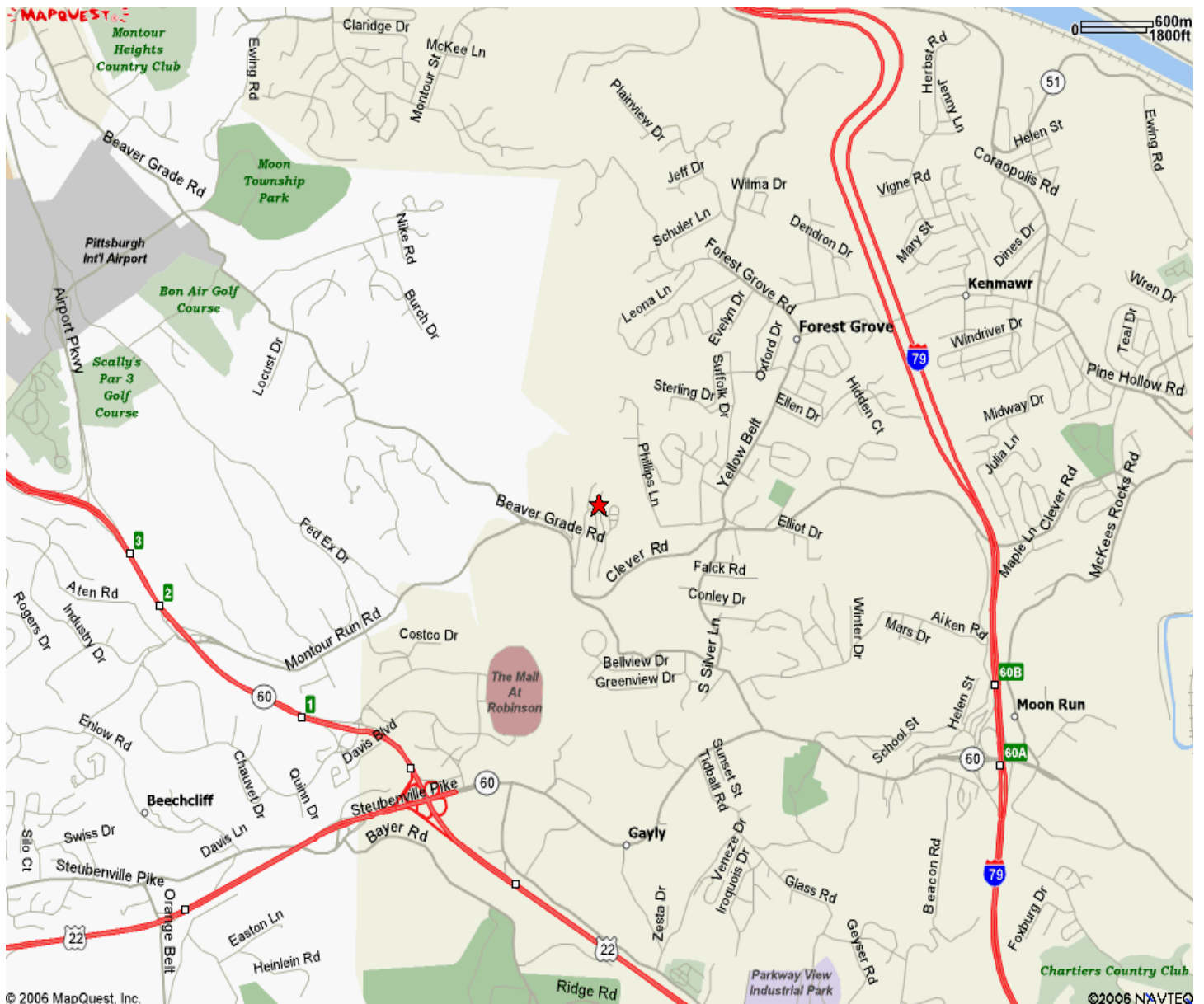


Corporate Accommodations, Inc.
"Making Pittsburgh Home"
1.800.899.5456
www.corpaccom.com

Directions

From Pittsburgh: Follow I-376W approximately 11.5 miles to (Montour Run Rd) Exit. Proceed straight at the traffic light onto Montour Run Rd. for 2.5 miles. Make a left onto Ventana Dr.

From Pittsburgh International Airport: Follow I-376E towards Pittsburgh. Take the (Montour Run Rd) Exit. Proceed straight at the 1st traffic light. At the 2nd traffic light turn right onto Montour Run Rd. for 2.5 miles. Make a left onto Ventana Dr.



Corporate Accommodations, Inc.
"Making Pittsburgh Home"
1.800.899.5456
www.corpaccom.com