



Highlands of Montour Run

100 Lincoln Highlands Drive, Coraopolis, PA 15108

The Highlands of Montour Run is located only minutes from the Pittsburgh International Airport and RIDC Park West. This upscale community is nestled in a quiet, wooded setting. Nearby, at Robinson Town Center, The Mall at Robinson and The Pointe at North Fayette, you will find dining and shopping at its finest.



The Highlands of Montour Run is rich with amenities. Relax in the outdoor pool after a long workout in the fitness center. The Highlands of Montour Run also offers both tennis and basketball courts. The Montour Trail runs adjacent to the property and is easily accessible for a creek-side stroll or bicycle ride.



Apartment Package

Complete Furniture Package-sofa, love seat, coffee and end tables, dining table, beds, nightstands, and dressers

Complete Housewares Package-microwave, coffee maker, electric can opener, toaster, cookware, dishes, glasses, utensils, flatware...everything needed to cook and serve

Modern Kitchen with Full Size Appliances-refrigerator, range, dishwasher, and garbage disposal

Washer and Dryer in each apartment

Expanded Cable Television with DVD and VCR

Internet Access-high speed broadband connection

Private Phone Line-free local calling and digital answering machine

Utilities-electric, gas and water

Weekly Housekeeping and linen exchange



Pet Policy-weight limit and restrictions-one time \$250 non-refundable pet fee

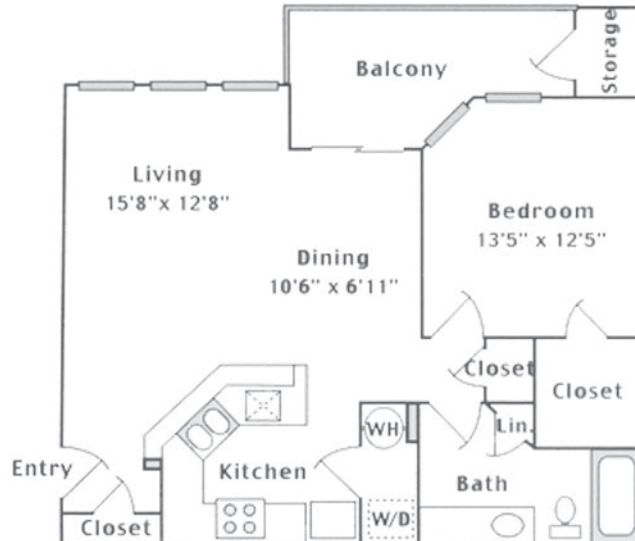
Rates	Square Feet	3-10 Nights *	11-29 Nights *	30 + Nights
		3 day vacate notice	7 day vacate notice	14 day vacate notice
1 bedroom	787	\$160	\$130	\$110
2 bedroom	1045	\$173	\$143	\$123
3 bedroom	1321	\$194	\$164	\$144

* Stays of less than 30 nights are subject to 14% tax, rate does not include tax.

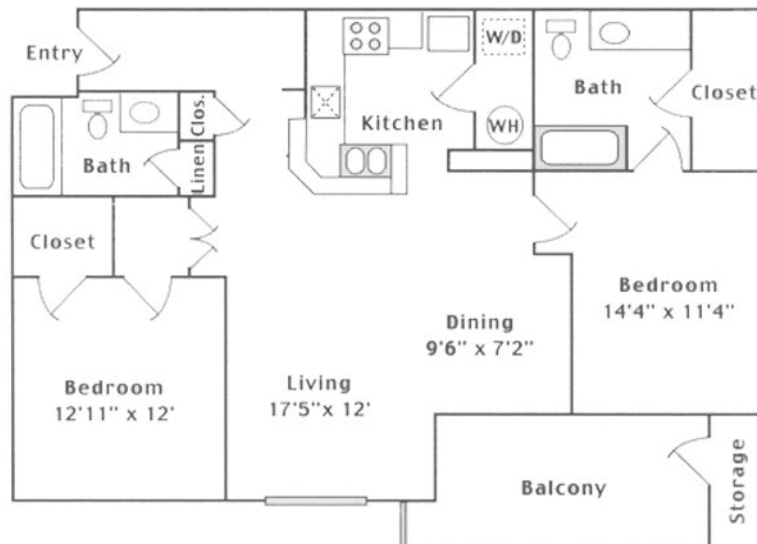
Corporate Accommodations, Inc.
"Making Pittsburgh Home"
 1.800.899.5456
www.corpaccom.com

Floor Plans

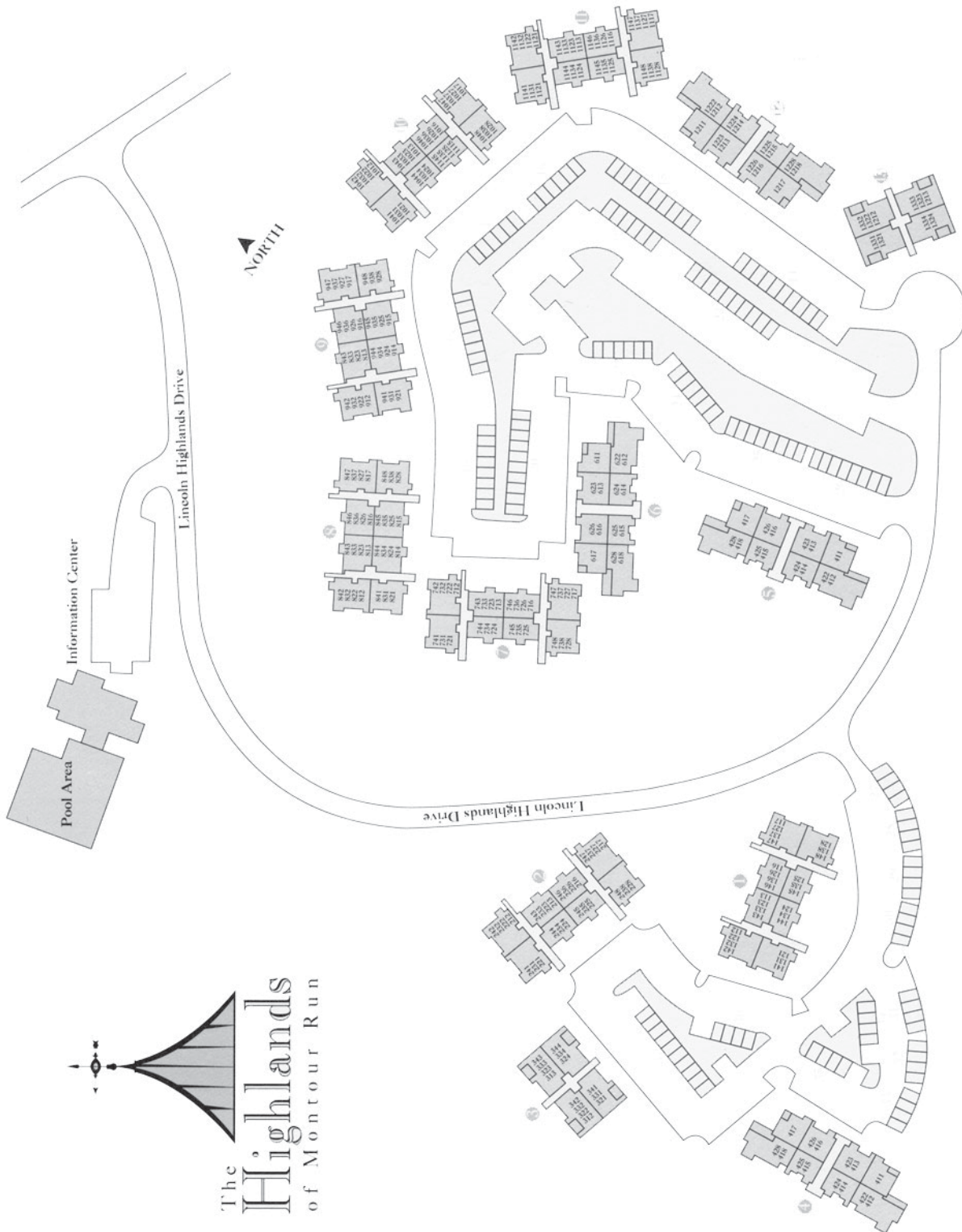
One Bedroom-787 Square Feet



Two Bedroom-1045 Square Feet



Property Map



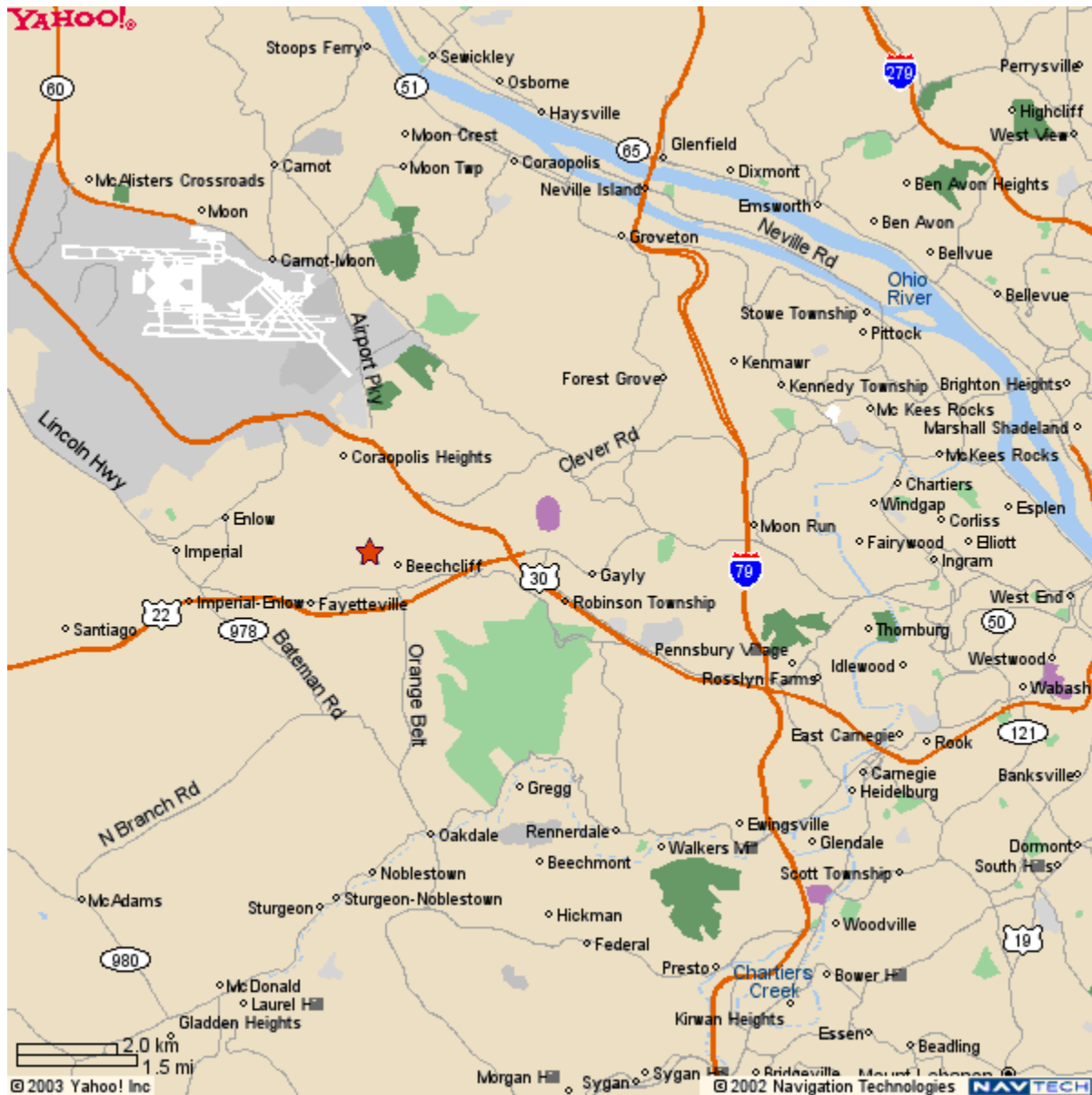
The
Highlands
of Montour Run

Corporate Accommodations, Inc.
"Making Pittsburgh Home"
1.800.899.5456
www.corpaccom.com

Directions

From Pittsburgh: Follow I-376 West to the Montour Run Road exit. Bear right at end of ramp. At first light, turn left onto Cliff Mine Road. At the first stop sign, turn left. The community will be on your right.

From Pittsburgh International Airport: Follow I-376 East to Montour Run Road exit. At the first light, turn right onto Cliff Mine Road. At first stop sign, turn left. The community is on your right.



Corporate Accommodations, Inc.
"Making Pittsburgh Home"
1.800.899.5456
www.corpaccom.com