



*"Making Pittsburgh Home"*

# *Belmont Ridge*

*1100 Belmont Boulevard, Monroeville, PA 15146*

**Belmont Ridge** is a convenient suburban location. This upscale community is located off of William Penn Highway/ US Route 22 in Monroeville, PA. Belmont Ridge is only 1 mile from The Pennsylvania Turnpike (I-76). Fine dining, shopping malls, and grocery stores are just a short distance away.



**Belmont Ridge** is rich with amenities. There is an outdoor swimming pool, 24-hour fitness center, and tanning bed. Other amenities include racquetball, basketball, tennis, and volleyball courts. Each building is constructed with open breezeways that

provide a private entry to every apartment. Relax with friends or colleagues on your spacious balcony or patio.



## Apartment Package

**Complete Furniture Package**-sofa, love seat, coffee and end tables, dining table, beds, nightstands, and dressers

**Complete Housewares Package**-microwave, coffee maker, electric can opener, toaster, cookware, dishes, glasses, utensils, flatware...everything needed to cook and serve

**Modern Kitchen with Full Size Appliances**-refrigerator, range, dishwasher, and garbage disposal

**Washer and Dryer** in each apartment

**Expanded Cable Television** with DVD and VCR

**Internet Access**-high speed broadband connection

**Private Phone Line**-free local calling and digital answering machine

**Utilities**-electric, gas and water

**Weekly Housekeeping** and linen exchange



**Pet Policy**-weight limit and restrictions-one time \$250 non-refundable pet fee

Rates	Square Feet
1 bedroom	725
2 bedroom	1002

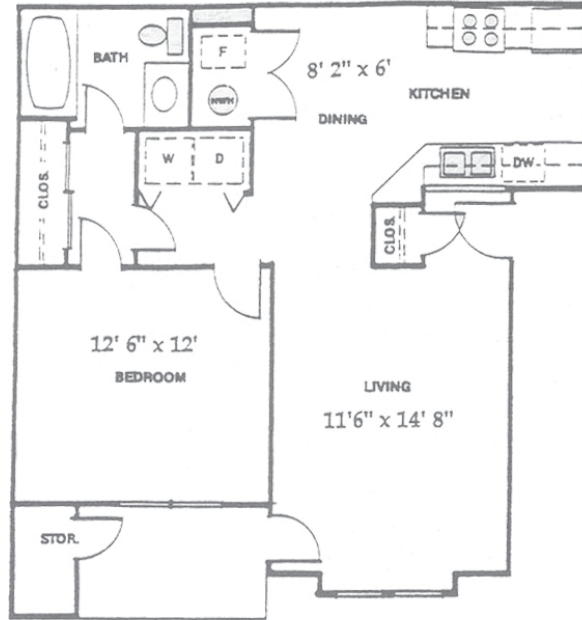
**Minimum Stay May Be Required  
Call For Details**

\* Stays of less than 30 nights are subject to 14% tax, rate does not include tax.

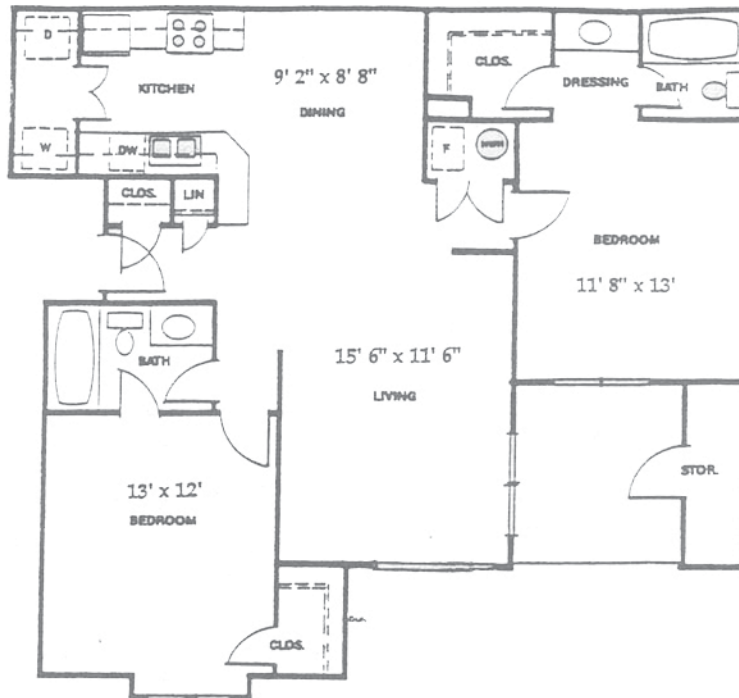
Corporate Accommodations, Inc.  
*"Making Pittsburgh Home"*  
1.800.899.5456  
www.corpaccom.com

## Floor Plans

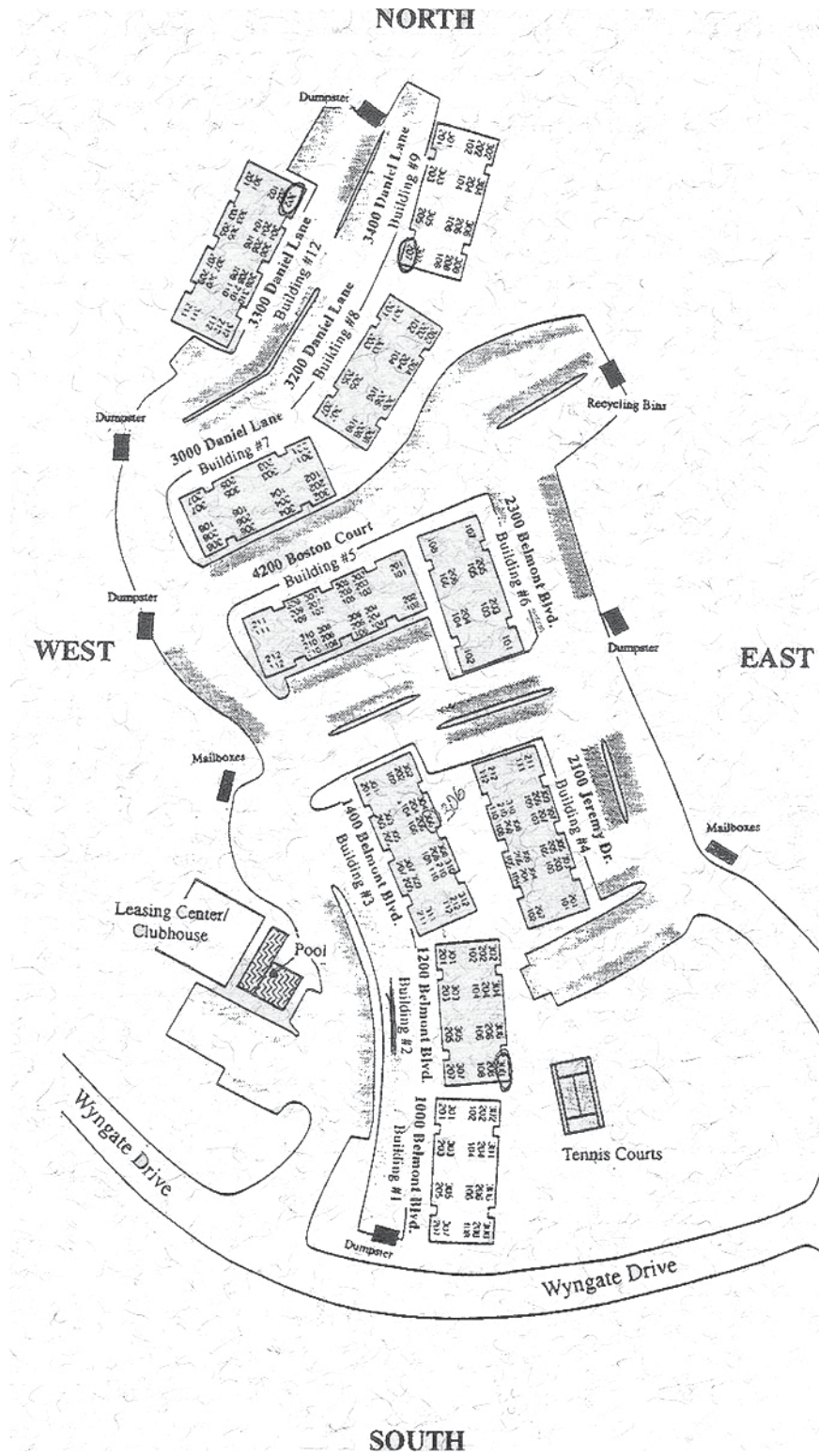
### One Bedroom-725 Square Feet



### Two Bedroom-1002 Square Feet



# Property Map

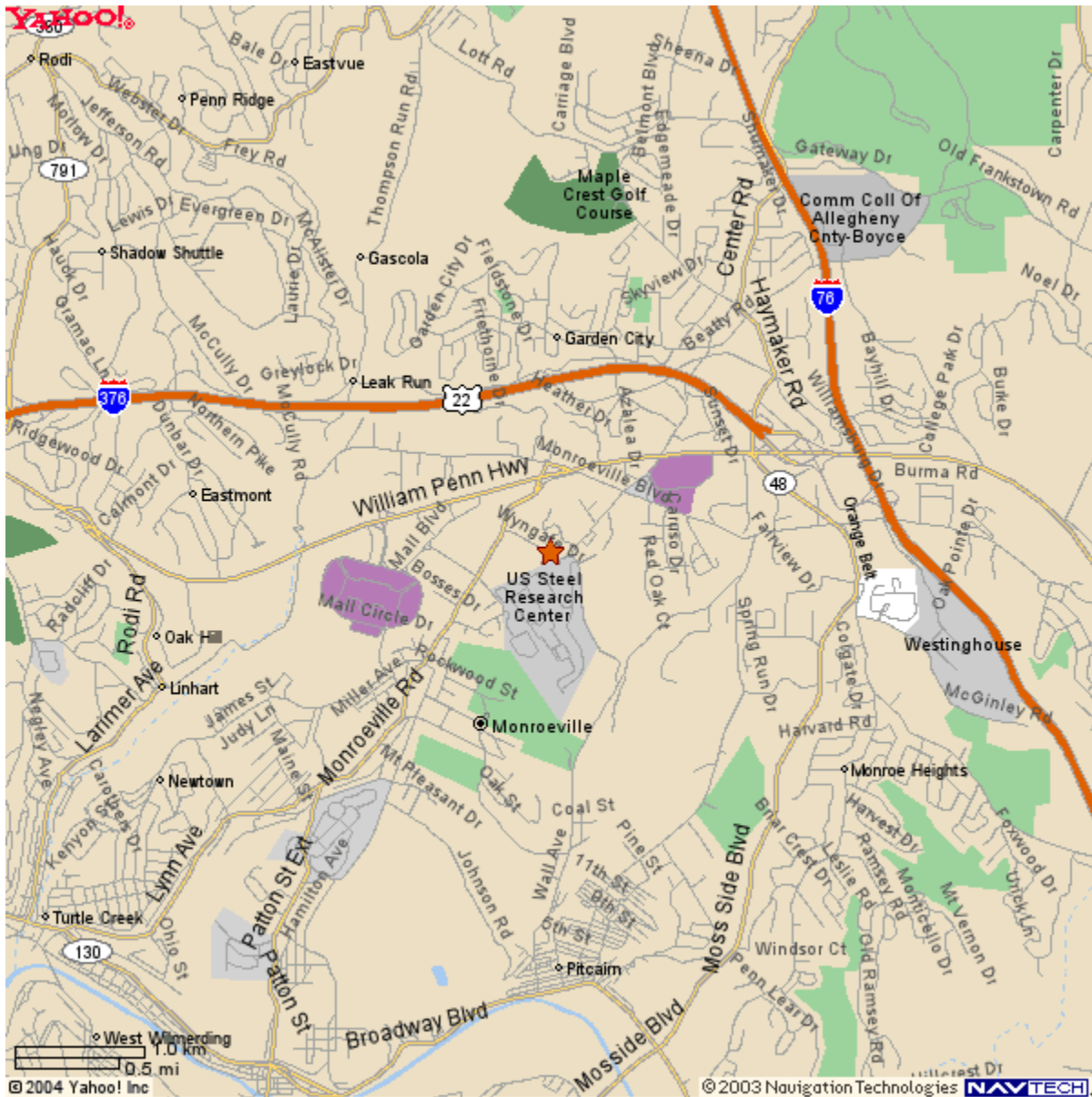


Corporate Accommodations, Inc.  
"Making Pittsburgh Home"  
1.800.899.5456  
www.corpaccom.com

## Directions

**From Pittsburgh:** Follow I-376 East to exit 14A. Turn right onto US Route 22. Turn left at 2nd light onto Stroschein Road. Go straight through next light and at bottom of hill turn right onto Wyngate Road. Belmont Ridge will be on your right.

**From Pittsburgh International Airport:** Follow I-376E towards Pittsburgh. Continue through the Fort Pitt Tunnels and upon exiting the tunnels merge right to continue on I-376 East. Follow I-376 East to exit 14A. Turn right onto US Route 22. Turn left at 2nd light onto Stroschein Road. Go straight through next light and at bottom of hill turn right onto Wyngate Road. Belmont Ridge will be on your right.



Corporate Accommodations, Inc.  
"Making Pittsburgh Home"  
1.800.899.5456  
www.corpaccom.com